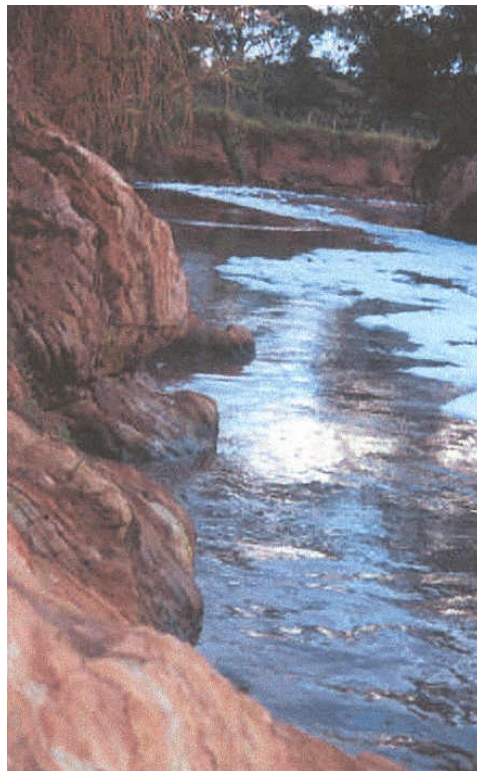




**Foto 38 - Ponto de mistura do efluente da ETE Samambaia com o rio Melchior**



**Foto 39 - Efluente do esgoto tratado da ETE Samambaia.**



**Foto 40 - Rio Melchior, logo a jusante da ETE Samambaia.**



**Foto 41 – Rio Melchior logo a montante do ponto de amostragem MC01, visto da ponte na DF-180.**

This document was created with Win2PDF available at <http://www.daneprairie.com>.  
The unregistered version of Win2PDF is for evaluation or non-commercial use only.